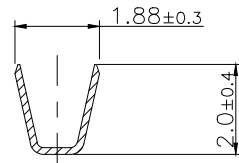
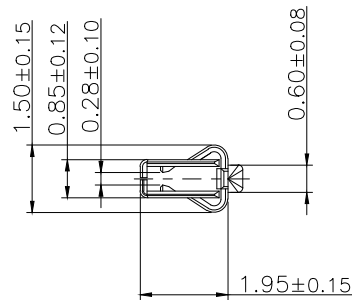


SECTION A-A



SECTION B-B



NOTES:

1. MATERIAL:PHOSPHOR BRONZE,THICKNESS 0.15 ± 0.01 MM
2. PLATING (PRE-TINNED)
50u" MIN. NICKEL PLATING OVERALL
L: 100u" MIN. PURE TIN PLATING OVERALL.
3. INSULATION DIAMETER $\phi 1.4$ MAX.
4. SPEC: PLS. REFER TO PS-51433-XXXXX-XXX
5. Q'TY: 10K PCS/REEL.
6. PART NUMBER

51433-T X X X-XXX

TYPE _____
0: NONE

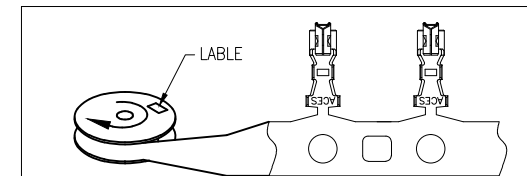
MATERIAL _____

1:PHOSPHOR BRONZE

XXX	AWG
CHI	#24-#30

PLATING

L: PURE TIN



WIND OPERATION AFTER
PLATING AND BEFORE
ASSEMBLY

QUALITY SYMBOLS MAJOR CRITICAL GENERAL TOLERANCES (UNLESS SPECIFIED) X. ± 0.5 .X ± 0.25 .XX ± 0.15 .XXX ± 0.1 ANGLES $\pm 2^\circ$	DRAWN BY Zhang,hongjun CHECKED BY Lu, Jing Quan APPROVED BY hsieh, fu yu	DATE 20'05/28 DATE 20'05/28 DATE 20'05/28	ACES ELECTRONICS 2.0 PITCH WTB Crimp Terminal
	UNITS mm SCALE 1:1	SHEET NO. 1 OF 1	